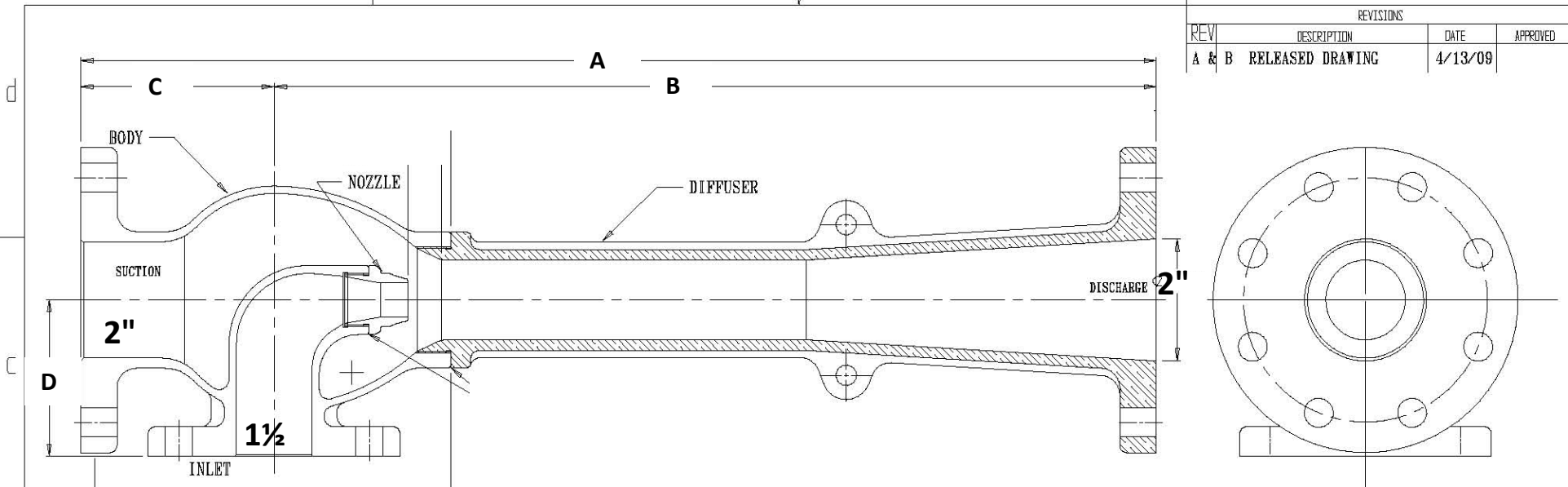


APPROVAL DRAWING

| REVISIONS | | | |
|-----------|------------------|---------|----------|
| REV | DESCRIPTION | DATE | APPROVED |
| A & B | RELEASED DRAWING | 4/13/09 | |



VF # 1542-2" L BILGE EDUCTOR
VF # 250-2" L BILGE EDUCTOR

1 1/2" x 2" x 2"
1 1/2" x 2" x 2"

Materials
Body & Diffuser Bronze ASTM B62
Nozzle Monel
Flanges: 150 LB ANSI B16.24 FF

Location: BILGE EDUCTOR
Service: BILGE SYSTEM EJECTOR
Shipyard:
Project:
Agent:
Curve # 7112502LS

Inlet 1 1/2" FLANGED
Suction 2" FLANGED
Discharge 2" FLANGED
"A" 17.6"
"B" 14"
"C" 3.6"
"D" 3.6"

Data
Motive Head Up to 150 PSI
Motive Flow Up to 171 GPM
Suction Lift Up to -23 FEET
Discharge Head Up to 100 FEET
Suction Flow Up to 110 GPM.



| Flanges | Inlet | Suction | Discharge |
|----------------|--------|---------|-----------|
| ID | 1 1/2" | 2" | 2" |
| OD | 5" | 6" | 6" |
| # Holes | 4 | 4 | 4 |
| Hole Ø | 5/8" | 3/4" | 3/4" |
| B.C. | 3 7/8" | 4 3/4" | 4 3/4" |
| Thick | 3/4" | 3/4" | 3/4" |

- Notes:**
- Hydro Tested to 200 PSI / Service: Stripping Ejector – Bilge or Ballast
 - For long inlet lines, use 2 1/2" and reduce at ejector to 1 1/2"
 - Allow for straight pipe on the eductor discharge equal to 8-10 times the discharge pipe diameters. Discharge pipe size requirement to be sized to fit application.
 - All bends on discharge shall be 45° or shall have a radius of 2 1/2 to 3 times diameter of pipe. Allow for length of straight pipe on the suction end of the eductor equal to minimum 6 times suction diameter
 - Eductor supplied to fit requirements of application. VM should be advised of all service conditions. Customer should follow VM installation and maintenance instructions. Final Eductor dimensions to be confirmed at time that order is placed.
 - Customer is responsible for calculations of friction and all losses in all pipe lines and components and providing data to VM.